

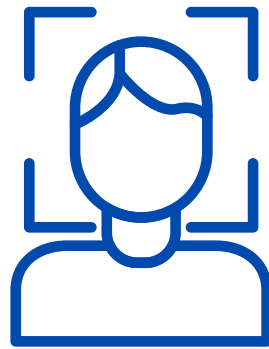


PRIMAX

2024 Catalog
Security Solutions



Barrier Security for Private and Public Spaces



3D Facial Authentication Door Access Controls

Welcome!

Primax Electronics Ltd., pioneers in security and smart access technologies extend an invitation to attendees to discover the latest advancements showcasing from April 9th to 12th, 2024. This event is a unique chance to witness pioneering solutions designed to bolster security and enhance user convenience.

This year's exhibit showcases an array of smart security devices, emphasizing the company's dedication to providing a one stop, customized technological solutions. Each product exemplifies their commitment to address the varied requirements of clients with innovative and precise solutions.

Can't wait to see you! - The Primax Team



mmWAVE RADAR



HELPER

Features

- Unobtrusive elderly care/healthcare in life
- Fall and presence detection with resident's position
- Complete 24/7 coverage, work in total darkness
- Privacy ensured (no camera)
- Virtual fence for intruder detection and safety prevention
- Instant accurate emergency alerts
- Hassle-free installation and set up

Specification

Radar Frequency:	60Ghz
RF Transceiver:	3x Transmitter / 4x Receiver
Detection FOV:	120°(H), 120°(V)
Detection Range:	10 meter
Waveform:	FMCW
Power/Connectivity:	PoE 802.3af PoE / USB
Wireless:	Wi-Fi 802.11b/g/n

GUARDIAN II

Features

- Alexa compatible
- Sensor fusion (AI camera + radar integrated)
- Edge AI, Customizable AI model and algorithm
- Support 4 category (Vehicle, People, Motorcycle, Bicycle)
- Multiple objects tracking simultaneous
- 24/7 and all weather
- Increased detection reliability and accuracy
- Pan-Zoom camera for wide detection and auto tracking

Specification

Processor:	4x ARM Cortex-A53 processor AI engine
Image Sensor:	CMOS, 8MP@30fps
mmWave Radar:	60Ghz, 79Ghz FMCW Radar
Detection FOV:	120°(H), 90°(V)
Detection Range:	50m
Communication:	Alexa, ONVIF Profile S/G/T
Power/Connectivity:	PoE+ IEEE 802.3at

MERCURY

Features

- Alexa compatible
- Suitable for outdoor asset surveillance and protection
- Accurate multi-threat detection and tracking
- Rugged, IP65, reliable 24/7 and all weather performance
- High detection accuracy and low false alarm
- Customized threat zone setting, virtual fence feature
- Angle resolution enhanced by TDM-MIMO
- Network integration with surveillance camera

Specification

Frequency:	60Ghz, 79Ghz
RF Transceiver:	3x Transmitter/4x Receiver
Max. Range:	2m~50m @ 3.5m mount height
Max. Velocity:	120Km/hr (Related)
Detection FOV:	120°(H), 90°(V)
Waveform:	FMCW
Power/Connectivity:	PoE+ IEEE 802.3at

5G OUTDOOR BULLET CAM



Features

- Bullet type, outdoor surveillance camera
- Qualcomm QCS6490 octa-core processors
- Camera with Startvis SONY image sensor
 - 4K / D130 degrees
 - Vari-focal Lens
 - HDR
- 5G Sub6 cellular modem integrated with removable Nano SIM
- In-visible antennas design
- Optional Wireless connectivity (WiFi 11ax & BT5.1)
- Support 850nm IR LED up to 50m for night vision & ALS
- Support 2-ways (alarm in/out, Line In/Out)
- Support EIS (6-axis IMU)
- Removable mSD local storage up to 512GB
- Power : 802.3at / DC 12V
- Network : RJ45, Ethernet 10M/100M
- IP67/IP66 and IK10

VIDEO SURVEILLANCE



MINI DOME

Features

- 5MP@30fps NIR enhanced image sensor
- Edge AI for motion detection and recognition
- Support 3x optical zoom and auto focusing
- Support HDR
- Auto day & night switch and Smart IR
- IR for night mode >45m
- Imaging angle adjustment(3-Axis, Pan:355°,Tilt:-90°~75°, Rotation:±350°)

Specification

Video:	H.264/H.265/MJPEG multiple streams
FOV:	D: 122°
Audio:	Line In/Line Out
Network:	Ethernet 802.3 100Base-T
Power:	PoE 802.3af / 12V DC-IN
Communication:	ONVIF Profile S/G/T
Protection:	IP66, IK10
Dimension:	120(D)x105(H) mm



MICRO DOME

Features

- NIR image sensor
- Image resolution support up to 4K@30fps
- Edge AI for motion detection and object recognition
- Support fixed focus optical lens
- Support HDR
- Day & night ICR / Smart IR
- IR for night mode >45m
- Imaging angle adjustment(3-Axis, Pan:355°,Tilt:-90°~75°, Rotation:±350°)

Specification

Video:	H.264/H.265/MJPEG multiple streams
Detection:	Events detection and alarm notification
FOV:	D: 122°
Wireless:	WiFi 11n
Power:	PoE 802.3af / 12V DC-IN
Communication:	ONVIF Profile S/G/T
Dimension:	90(D)x83.3(H) mm



VANDAL-DOME

Features

- Up to 4K STARVIS image sensor with 0.001 Lux (B/W)
- 3x Motorized Vari-focal lens with P-iris lens control
- Support Electronic Image Stabilization
- Edge AI for events detection and alarm notification
- HDR
- Auto day & night switch and Smart IR
- Imaging angle adjustment(3-Axis, Pan:355°,Tilt:-90°~75°, Rotation:±350°)

Specification

Video:	H.264/H.265/MJPEG multiple streams
FOV:	H: 106°
Audio:	Build MIC and audio I/O
Alarm I/O:	Support
Network:	Ethernet 802.3 100Base-T
Power:	PoE 802.3af / 12V DC-IN
Protection:	IP66, IK10 (Outdoor) / IP52 (Indoor)
Operation Temp.:	-40°C-55°C (Outdoor) -20°C-50°C (Indoor)
Dimension:	148(D)x119(H) mm

SURVEILLANCE CAMERA SERIES



DOME

ABF BOX

BULLET

Features

- 2MP STARVIS image sensor with 0.001 Lux (B/W)
- Max. image resolution up to 1080p@30fps
- Edge AI for events detection and alarm notification
- 3x Motorized Vari-focal lens
- HDR
- Auto day & night switch and Smart IR
- 3-Axis Imaging angle adjustment

Specification

Video:	H.264/H.265/MJPEG multiple streams
Audio:	2-ways audio
Detection:	Events detection and alarm notification
FOV:	D: 122°
Power:	PoE 802.3af / 12V DC-IN / AC 24V
Communication:	ONVIF Profile S/G/T
Protection:	IP66, IK10+ (Bullet/Dome)
Operation Temp.:	-40°C-55°C (Outdoor) / -20°C-50°C (Indoor)

INDOOR WIRELESS IP CAM



Features

- Support 2MP/30fps video resolution
- Edge AI for motion detection
- Support HDR
- Support 8M IR range in night vision
- Support WiFi 2.4G/5GHz dual band and BLE5.1
- Easy installation

Specification

Video:	H.264/H.265/MJPEG multiple streams
Audio:	2-ways audio
Detection:	Events detection alarm notification
FOV:	106.9°(H), 55.9°(V), 130°(D)
Wireless:	WiFi 2.4GHz/5GHz
Power:	BT5.1 USB 5V



Features

- Support 2MP/30fps video resolution
- Edge AI for motion detection
- Support HDR
- Support 8M IR range in night vision
- Support WiFi 2.4G single band and BLE4.2
- Easy installation

Specification

Video:	H.264/H.265/MJPEG multiple streams
Audio:	2-ways audio
Detection:	Events detection alarm notification
FOV:	106.9°(H), 56°(V), 130°(D)
Wireless:	WiFi 2.4GHz, BLE4.2
Power:	USB-C 5V

SMART DOORBELL



BUZZ

Features

- Wired Powered Video Doorbell with FOV 180
- Support 2K / 30fps Video Resolution
- Long Range Wireless High Bandwidth: 802.11ah WiFi Halow
- Better Wireless Penetration Through Objects & Walls
- Object Detection
- Wide-Range Field of View

Specification

Video:	H.264 encoding
Audio:	Two-way
FOV (Video):	180° H+V (Fisheye)
Wireless:	Wi-Fi (2.4/5 GHz)
Power:	Hardwired (16 ~ 24 VAC)
IP rating:	IP65
Integration:	Apple HomeKit
Ring Chime:	Mechanical / Wireless Ring Chime
Camera:	4MP RGB Sensor
Dimension:	124.3x43x28mm

WEMO & ENTRY

Features

- Support 2K/30fps video resolution
- HDR support
- Enhanced infrared night vision
- Integrated 2.4G/5GHz dual bands wireless connectivity
- Support HomeKit Secure Video for face recognition and smart notifications

Specification

Video:	H.264/H.265/MJPEG multiple streams
Audio:	2-ways audio
FOV (Video):	146°(H), 178°(V)
Wireless:	Wi-Fi 11ax, BLE 5.0
Power:	AC 16V-24V
IP rating:	IP65
Dimension:	30x41x120mm

PRO

Features

- Support 2K/30fps video resolution
- HDR support
- Enhanced infrared night vision
- Integrated 2.4G/5GHz dual bands, BLE 5.0 wireless connectivity
- Support HomeKit Secure Video for face recognition and smart notifications

Specification

Video:	H.264/H.265/MJPEG multiple streams
Audio:	2-ways audio, 2W Speaker
FOV (Video):	146°(H), 178°(V)
Wireless:	Wi-Fi 11ax, BLE 5.0
Storage:	Local Micro SD/Cloud
Power:	AC 18V-24V, Battery power
IP rating:	IP65
Dimension:	39x47x147mm

DOOR LOCK



ASTRO BOY

Features

- Auto Locking
- Delay Locking
- Privacy Mode
- Equipped w/ Secure IC
- Tamper Detection, Accelerometer, Temperature sensor, Tamper detection switch
- Door position detection

Specification

Connectivity:	IEEE 802.11 b/g/n Wi-Fi
Power Source:	AA Alkaline Batteries * 4 9V Emergency Power Supply
Certification:	ANSI/BHMA A156.36 Grade 2
Unlock Method:	Passcode, NFC, Fingerprint, Mechanical Key
Integration:	Apple HomeKit
Dimension (L x W x T):	124 x 76.5 x 21.3mm (F) 156.1 x 74.2 x 34mm (R)

WOODY

Features

- Auto Locking
- Delay Locking
- Privacy Mode
- Equipped w/ Secure IC

Specification

Connectivity:	Bluetooth 5.0, LoRa
Power Source:	Lithium Batteries *2
Tail Piece Adaptor:	Schlage, Kwikset, Yale
Access Control:	Passcode, Bluetooth 5.0
Integration:	Amazon Sidewalk
Sensors:	E-Compass Sensor (Door position detection)
Dimension (L x W x T):	Keypad: 98 x 76 x 24mm Lock: 149 x 72.8 x 34.2mm

HOOK

Features

- 10-digit Backlit keypad with one-touch locking
- Support Z-Wave Long Range
- Tapered deadbolt design

Specification

Connectivity:	Z-Wave® 800 series
Power Source:	6V (AA Alkaline Batteries * 4)
Weather Resistance:	IP54 (Exterior)
Unlock Method:	Passcode, Unlock by Z-Wave
Others:	Exterior LED status indicator- Locked/Unlocked status Interior Buzzer sound indicator
Dimension (L x W x T):	Exterior: 68x 105 x 30mm Interior: 68 x 145 x 45.5 mm

SMART KEYPAD



SCOTT-M

Features

- Support Matter
- WiFi 6 TWT power saving
- Auto 3D facial recognition
- Human presence detection
- Registration data update via BLE.
- Low battery detection
- Power saving mode

Specification

Connectivity:	Bluetooth 5.0
Power Source:	CR123A Lithium Battery *6
Weather Resistance:	IP65
Access Control:	Passcode, NFC Unlock by phone
Facial Recognition dist.:	< 1.5m
Others:	Accelerometer (Tamper protection) Buzzer, Indication LED
Dimension (L x W x T):	105 x 35 x 67mm

BULLSEYE

Features

- Capacitive Touch
- Force Sensing
- Work with glove
- Work with pouring water

Specification

Connectivity:	Bluetooth 5.0 Low Energy
Power Source:	AAA Alkaline Batteries *2
Battery Life:	6 Months
Certification:	ANSI/BHMA A156.36 Grade 2
Dimension (L x W x T):	Keypad: 98 x 76 x 24mm

3D FA DOOR LOCK



WALLE-S

Features

- 3D liveness detection (IR structure light)
- In-stride facial authentication
- Proximity detection
- Remote face enrollment
- Battery monitoring
- Video + 2-way audio
- Matter integrated
- Structure lighting
- 10K face data storage

SIMBA

Features

- 3D liveness detection (Dual NIR)
- In-stride facial authentication
- Proximity detection
- Battery monitoring
- Matter integrated
- 100 face data storage

Specification

Connectivity:

WiFi, BLE 5.0, Thread (or WiFi-6)

Power Source:

Re-chargeable Battery pack

Weather Resistance:

IP65

Access Control:

Dual NIR FA, Passcode, NFC
Lock/ Unlock (Local/ Remote)

Facial dist.:

< 1.5m

Others:

Tamper protection

Dimension (L x W x T):

Buzzer, LED Indication

Exterior lock: 172.6 x 74.2 x 28mm

Interior lock: 184 x 75 x 36.2mm



Contact us:

Jill.Shan@primax.com.tw

Marketing@primax.com.tw

Address: No. 669, Ruiguang Rd, Neihu District, Taipei City, 114

www.primax.com.tw